

Love learning locally

South
Derbyshire

Derbyshire Adult Community Learning

January to April 2023
Courses

**Book
Now**

Booking, Payment and Fees

How to book and pay

Booking and payment for all our Community Learning courses is via our Eventbrite page derbyshireadulthoodeducation.eventbrite.com*

Help with online booking

If you struggle with online booking and payment we are here to help. Drop in to your local centre or give them a call. Centre contact details are on the back page. If you get the answer machine leave a message with your name and contact details and someone will call you back.

Course fees explained

Many of our 'Community Learning' courses have three different fee bands:

- Fee A: Full fee
- Fee B: Derbyshire Gold Card holders
- Fee C: Concessions for those on certain benefits/ allowances

For more details on course fees and concessions visit www.derbyshire.gov.uk/coursefees or ask in your local centre.

Some courses may also have additional materials costs as indicated in the course listings. See course information on our Community Learning pages and Eventbrite for details.

Cancellations

If you need to cancel your place on a course you have booked on to, you can do it yourself on Eventbrite, contact the organising centre or email adult.education@derbyshire.gov.uk.

Please note that if you cancel your place on a course which has fees, the percentage of the fee that covers the Eventbrite costs is non-refundable (approximately 6%).

If for any reason we have to cancel a course, the full fee is refundable. If we have to change a centre-based course to an online course (for safety reasons) and you wish to cancel your place, the full fee is refundable.

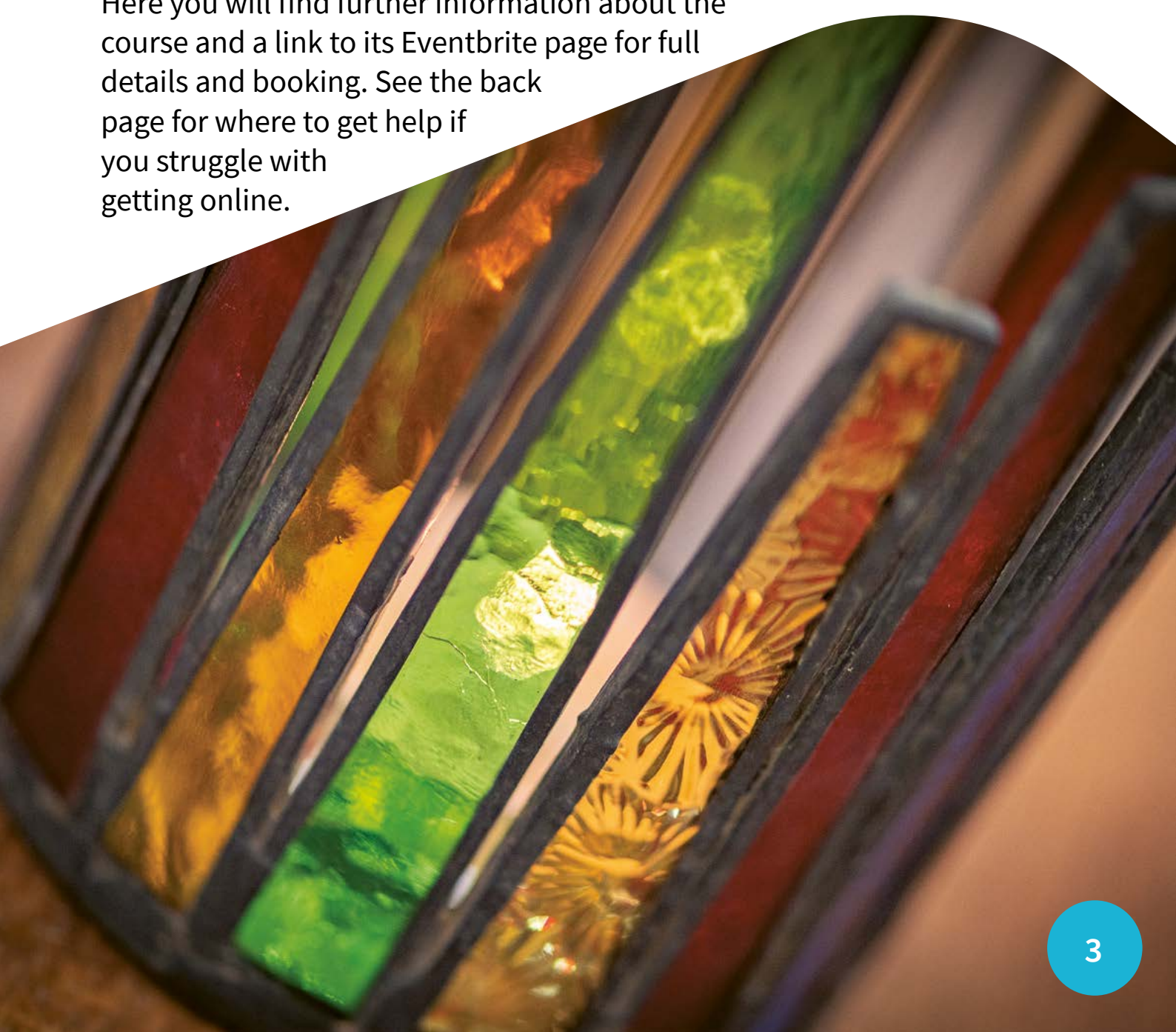
* Except for courses that say to contact centre. We can help you with online booking if you need it.

Welcome to our Spring Programme

This brochure contains our Community Learning courses in Cotmanhay, Ilkeston, Long Eaton and Swadlincote from January to Easter 2023. It includes details of our centre-based and outdoor courses and provides information on where to find out more about our online courses.

To find out more and book on a course simply go to www.derbyshire.gov.uk/coursesearch and click on **Community Learning** to search for a course. Simply scroll down the page to look for courses at a particular venue or use the menu on the left to search for courses by subject.

Here you will find further information about the course and a link to its Eventbrite page for full details and booking. See the back page for where to get help if you struggle with getting online.



Cotmanhay and Ilkeston

Cotmanhay and Ilkeston ACE Centre, Bennerley Avenue,
Cotmanhay, DE7 8PF

The Cotmanhay and Ilkeston team can be contacted on cotmanhayandilkeston.ace@derbyshire.gov.uk or **01629 531807** for any additional information you require about Cotmanhay courses, or for help with online booking. The Cotmanhay and Ilkeston ACE Centre is usually open on Mondays, Tuesdays and Wednesday 9am to 3pm

Scan the QR code to book



For further information on any of the courses listed below and to book visit www.derbyshire.gov.uk/communitylearning

Course Title	Wks	Day, Date and Time	Fee A	Fee B	Fee C
Cotmanhay and Ilkeston ACE Centre					
Winter Herbal Remedies £	1	Tuesday 17 January, 9.30am to 12noon	FREE	FREE	FREE
Art for Wellbeing £	5	Wednesday 18 January to Wednesday 15 February, 1pm to 3pm	£44	£38	£12
Family Learning – Making Story Sacks Taster	1	Monday 30 January, 1pm to 3pm	FREE	FREE	FREE
Family Learning – Cook your own Lunch	1	Wednesday 22 February, 10am to 12noon	FREE	FREE	FREE
Family Learning – Cook your own Tea	1	Wednesday 22 February, 1.30pm to 3.30pm	FREE	FREE	FREE
Family Learning – Making Story Sacks	5	Monday 27 February to Monday 27 March, 1pm to 3pm	FREE	FREE	FREE
Art for Wellbeing £	5	Wednesday 01 March to Wednesday 29 March, 1pm to 3pm	£44	£38	£12
Natural Cleaning – Make your own Products £	1	Tuesday 07 March, 10am to 1pm	FREE	FREE	FREE

£ These courses have additional materials costs. See course information on our website and Eventbrite for details

Long Eaton

Scan the QR code to book



Community House, 173 Derby Road,
Long Eaton, NG10 4LL

The Community House team can be contacted on communityhouse.ace@derbyshire.gov.uk or **01629 537384** for any additional information you require about Community House courses, or for help with online booking. The office is usually open Monday to Thursday 9am to 3pm

For further information on any of the courses listed below and to book visit www.derbyshire.gov.uk/communitylearning

Course Title	Wks	Day, Date and Time	Fee A	Fee B	Fee C
Long Eaton ACE Centre					
Lip Reading All Abilities	10	Thursday 12 January to Thursday 23 March, 1pm to 3pm	FREE	FREE	FREE
Willow Weaving – Decorative Plant Supports £	1	Monday 13 February, 10am to 3.30pm	£28	£24	£9
Painting Spring Flowers with Impact	1	Wednesday 29 March, 10am to 3pm	£28	£24	£9
Walk and Learn – Women who volunteered – Britain's canals in the Second World War	1	Thursday 13 April, 1pm to 3pm	FREE	FREE	FREE
Hermits Cave, West Hallam					
Family Learning – Map Reading Skills Taster	1	Wednesday 12 April, 1pm to 3pm	FREE	FREE	FREE
Sawley Marina					
River Trent in Times Past	1	Tuesday 11 April, 1pm to 3pm	FREE	FREE	FREE

£ These courses have additional materials costs. See course information on our website and Eventbrite for details

Swadlincote

Swadlincote Centre, Rink Drive, Swadlincote, DE11 8JL

For additional information about Swadlincote courses, or for help with online booking contact the Swadlincote

ACE team on swadlincote.ace@derbyshire.gov.uk or

01629 533290 for any additional information you require about Swadlincote courses, or for help with online booking. The office is usually open Monday to Thursday 8.30am to 4pm

For further information on any of the courses listed below and to book visit www.derbyshire.gov.uk/communitylearning

Scan the QR code to book



Course Title	Wks	Day, Date and Time	Fee
ALDD Arts & Crafts	5	Monday 16 January to Sunday 12 February, 10am to 12noon	FREE
Personal Development – Reiki Level 1	5	Wednesday 18 January to Wednesday 15 February, 10am to 12noon	FREE
ALDD Arts & Crafts	5	Monday 27 February to Monday 27 March, 10am to 12noon	FREE
Personal Development – Reiki Level 1	5	Wednesday 01 March to Wednesday 29 March, 10am to 12noon	FREE
Introduction to meditation	5	Tuesday 17 January to Tuesday 14 February, 10am to 12.30pm	FREE
Crystal Therapy L1	5	Thursday 19 January to Thursday 16 February, 10am to 1pm	FREE
Crystal Therapy L2	5	Thursday 02 March to Thursday 30 March, 10am to 1pm	FREE
Tai Chi for wellbeing	4	Tuesday 07 March to Tuesday 28 March, 10am to 12noon	FREE
Lip Reading	10	Tuesday 17 January to Tuesday 28 March, 9.30am to 11.30am	FREE

£ These courses have additional materials costs. See course information on our website and Eventbrite for details

Our Online Courses

If you can't attend one of our centre-based courses an online course may work for you. Courses coming up this term include:

- Art and craft courses and workshops
- Brightside courses
- Careers workshops
- German, Italian and Spanish courses at various levels
- Health and wellbeing courses including complementary therapies
- Lip reading
- Murder mysteries
- Tai Chi



If you are not sure about online learning, sign up for one of our **FREE online taster sessions**. These are an opportunity to find out if this style of learning suits you.

Our **live online courses** are delivered using freely available video conferencing software, usually Microsoft Teams. We make it as easy as possible for you to join a course, whatever device you have. You will be sent a link a few days before the course together with information about any resources you need for the course. Your tutor will guide you through the course activities.

Our **self-paced courses** are online workshops that you can work through at your own pace at any time during a 30-day period. They are hosted on a website called 'Nearpod'. You just click on the link provided and it takes you straight in to the course.

For full details of all of our current online courses visit **www.derbyshire.gov.uk/communitylearning** and scroll down for the links to our **live online courses** and **self-paced courses** collections on Eventbrite.

Please read course details carefully before booking to check that the content and level is suitable for you. If unsure please email **adult.education@derbyshire.gov.uk** with your question and contact details and someone will get back to you.

Brightside Mental Health

One in four of us experience mental health problems at some time in our lives. Brightside courses are designed for anyone with mental health difficulties or emotional stress, e.g. suffering from anxiety, depression, emotional or psychological, stress or isolation, low confidence and/or self-esteem.



There are a variety of courses to choose from across the county including cookery, healthy eating, gardening, poetry, creative writing and exercise. Courses include both online and centre-based options. Look out for Brightside courses in our brochures and visit www.derbyshire.gov.uk/BrightSide

Family Learning



Our family learning courses are a fun way to enjoy time together whilst learning new skills. Courses are suitable for parents/carers/grandparents and school aged children. See derbyshire.gov.uk/familylearning for more information. Please read the course information on Eventbrite for age suitability.

Making Choices

If you are thinking of going back to learning and maybe working towards a qualification, attending a 'Making Choices – Step into Learning' session will help you to find out your level of working and help decide on the options available.

Contact your local centre to book on to a session or email making.choices@daces.derbyshire.gov.uk



Keeping you and your loved ones safe

You may wonder why, when you book on a community learning course, you are asked to watch a video about **Prevent**, the government strategy to safeguard people and communities from the threat of extremism and terrorism. You may think that there are no terrorists or extremism in Derbyshire or that it won't affect you.

Prevent referrals in Derbyshire have increased in the past year, with Counter Terrorism Police being particularly concerned about:

- Self-initiated terrorists (S-Its)
- Online extremism
- Extreme right-wing terrorism
- Islamist terrorism

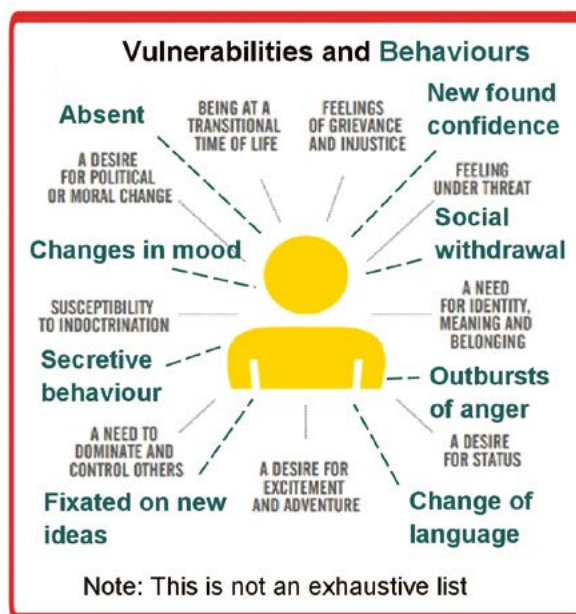
The ongoing COVID pandemic has resulted in some people being isolated and spending more time online. This includes people who are the most vulnerable to being drawn into supporting extremist beliefs.

In Derbyshire, the highest number of referrals in this past year were:

- from the police and education providers (including DACES)
- for young people aged between 12 and 16
- in Derby City, followed by Amber Valley and then Chesterfield

Social media and messaging sites can be used to reach out to vulnerable and young people and can communicate extremist messages. You might not be a key target for those wanting to draw people into extremism and terrorism, but someone in your family might be. The diagram (right) shows some things to look out for.

If you are worried that someone you know may be being drawn into extremism or terrorism, talk to your tutor or any of our staff **today.**



Achieve your potential in English and maths

We provide courses of up to 30 weeks, where you can work at your own pace towards the qualification you need and join at any time.

We offer:

- Nationally recognised Functional Skills qualifications from Entry Level to Level 2 including GCSE
- All classes are **FREE**
- Many classes that you can join at any time of year
- Small, friendly groups
- The option to study online, in centre or through a mixture of online and centre-based sessions.
- 2 week 'Step Up to GCSE' courses to prepare you for a full GCSE course



Contact your local centre to find out what courses are available near you or email making.choices@daces.derbyshire.gov.uk

Improve your digital skills

Now, more than ever, using a computer for creating documents, researching information, and communicating by email and video conferencing are essential skills both at home and at work.

If you are taking your first steps towards going online, you might want to try a Step into Digital Skills course. Ask about courses in Glossop or Buxton.

We also offer qualifications in digital skills, whether you are new to computers or have a bit more confidence. These include:

- Essential Digital Skills – **FREE** courses at Entry Level / Level 1

Contact your local centre to book on to a course or email making.choices@daces.derbyshire.gov.uk



Upskilling for a changing job market

New skills and qualifications can help boost your chances of success in a competitive and rapidly changing job market.

Take a few minutes to look at the qualification and skills courses we have on offer. Many courses are free or have fee reductions depending on your personal circumstances. Visit www.derbyshire.gov.uk/qualifications to find out more

Free Careers workshops

If you aren't sure where to start or need help with preparing a CV, doing applications or interviews, we can help, whatever your age and ambitions. We offer **FREE online** short careers workshops run by Derbyshire County Council Careers Service coaches including:

- CV and Job Search Skills
- Identifying Transferable Skills
- Interview Skills
- 18 to 24 job/careers workshop
- 50+ job/careers workshop

For more information visit www.derbyshire.gov.uk/communitylearning and choose 'Employability' courses from the menu on the left.

Careers Advice and Online Learning Support

Derbyshire County Council Careers Service provides impartial information, advice and guidance on work and learning related matters to help you make informed decisions on learning, training, work and / or volunteering.

Meeting with a qualified Careers Coach can help you make career decisions throughout your life. From your chosen education route, planning a career change at any age or getting the job that is right for you.

For impartial information, advice and guidance on careers and learning visit www.derbyshire.gov.uk/careersservice



Supporting you to learn

Tell us about your needs when enquiring or booking on a course – we will always work to meet the needs of each learner. Our Eventbrite booking form asks for details of any disability or learning difficulty you may have. If you request it, someone will be in touch to discuss your needs and ask what we can do to help your learning.

All additional support provided is based on individual assessment. For detailed information about the support that we can provide, including financial help and learning support, visit derbyshire.gov.uk/theguide or contact the centre providing your course.



Contact us

For more details about a particular course or venue,
or help with online booking:

Cotmanhay and Ilkeston

cotmanhayandilkeston.ace@derbyshire.gov.uk 01629 531807

Long Eaton communityhouse.ace@derbyshire.gov.uk
01629 537384

Swadlincote swadlincote.ace@derbyshire.gov.uk
01629 533290

For all other enquiries, comments or complaints contact:
adult.education@derbyshire.gov.uk

Please be aware that our centres are not open every day. If you get the answer machine please leave a message with your name and contact details and someone will call you back.

For further information or to get a copy of this brochure in a community language, on audio tape or in large print please call your local ACE centre.

The details in this brochure are correct at the time of going to print.



Education & Skills
Funding Agency



Quality Standard for information
advice and guidance services
Approved by the Quality Assurance Board